



## Quarterly Report on Sales Tax and Business Activity

### Top 25 Sales Tax Remitters

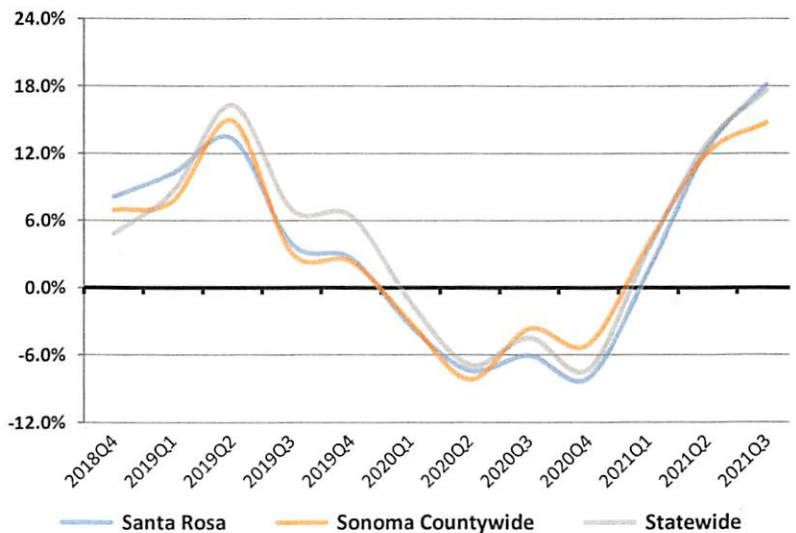
- BEST BUY STORES
- CARMAX AUTO SUPERSTORES
- CHEVRON SERVICE STATIONS
- CONSOLIDATED ELECTRICAL DISTRIBUTORS
- COSTCO WHOLESALE
- FREEMAN TOYOTA
- HANSEL BMW OF SANTA ROSA
- HANSEL FORD LINCOLN HANSEL MAZDA
- HANSEL SUBARU
- HOME DEPOT
- INDEPENDENT ELECTRIC SUPPLY
- KEYSIGHT TECHNOLOGIES
- LITHIA CHRYSLER DODGE JEEP RAM FIAT OF SANTA ROSA
- MACY'S DEPARTMENT STORE
- MANLY HONDA
- MANLY HYUNDAI
- MEAD CLARK LUMBER CO.
- NISSAN OF SANTA ROSA
- PACE SUPPLY
- PLATINUM CHEVROLET
- ROSS STORES
- SAFEWAY STORES
- SMOTHERS EUROPEAN VOLVO
- TARGET STORES
- VALERO SERVICE STATIONS

### 3rd Quarter 2021 in Review

California sales tax cash receipts increased by 17.6% from the same quarter last year. In this jurisdiction sales tax cash receipts increased by 16.2% from the same quarter last year due to a increase of \$165,030,000 in Taxable Sales.

Cash Receipts	Quarter	Annual
<b>Santa Rosa</b>	16.2%	18.1%
<b>Sonoma Countywide Pool</b>	-7.8%	11.1%
<b>Sonoma Countywide</b>	12.7%	14.7%
<b>S.F. Bay Area Region</b>	13.6%	11.5%
<b>Statewide</b>	17.6%	17.6%

### Annualized Percent Change in Sales Tax Cash Receipts



### Business Activity

- General Retail
- Food Products
- Transportation
- Construction
- Business To Business
- TOTAL LOCAL BUSINESS ACTIVITY**
- COUNTYWIDE POOL ACTIVITY**

Quarter	Santa Rosa		S.F. Bay Area		California	
	Quarter	Annual	Quarter	Annual	Quarter	Annual
	23.5%	16.9%	8.1%	7.0%	20.5%	12.7%
	22.0%	7.8%	21.8%	-5.5%	24.2%	-0.3%
	19.0%	21.6%	6.6%	8.4%	14.8%	8.7%
	8.1%	12.1%	-3.0%	3.9%	1.4%	3.4%
	13.7%	5.2%	1.0%	3.6%	5.1%	-1.2%
	<b>18.7%</b>	<b>15.1%</b>	<b>7.0%</b>	<b>3.6%</b>	<b>14.6%</b>	<b>5.4%</b>
	<b>-4.9%</b>	<b>15.3%</b>	<b>-2.5%</b>	<b>7.7%</b>	<b>0.5%</b>	<b>14.7%</b>





## News

- Economic Activity:** Real Gross Domestic Product (GDP) grew at a seasonally adjusted annualized rate of 2.0% in the third quarter of 2021. Real GDP in Q3 2021 surpassed its Q4 2019 pre-pandemic peak by 1.4%. (BEA)
- Employment:** The U.S. unemployment rate fell by 0.6% to 4.6% in October of 2021 compared to August of 2021. Total U.S. nonfarm payroll employment increased by 531,000 (0.2%) in October of 2021. California's unemployment rate decreased to 7.3% in October, a slight .3% improvement from June of 2021. California's civilian employment increased by 201,500 (1.2%) in October of 2021 compared to June of 2021. (BLS, EDD)
- Personal Income:** U.S. personal income increased by 4.3% for the third quarter of 2021, compared to same quarter previous year. U.S. personal income for the year of 2021Q3 has increased by 6.4% compared to the 2020Q3 yearly personal income amount. (BEA)

## Santa Rosa

### Annual Per Capita Sales Tax

Adjusted for Inflation

(Constant 2017 \$)

