



**MOBILEHOME RENT CONTROL**  
**Consumer Price Index (CPI) Percent Change**

**All Urban Consumers (CPI-U)**  
**San Francisco–Oakland–Hayward, CA Metropolitan Area\*\***

<b>Percent Change in CPI for 12-month Period Ending in August*</b>	
2001	5.1%
2002	1.3%
2003	1.4%
2004	1.2%
2005	2.2%
2006	3.8%
2007	2.6%
2008	4.2%
2009	0.2%
2010	1.0%
2011	2.9%
2012	2.8%
2013	2.0%
2014	3.0%
2015	2.6%
2016	3.1%
2017	3.0%
2018	4.3%
2019	2.7%
2020	1.6%

\*Allowable annual space rent increase for mobilehome spaces subject to Rent Control, pursuant to Santa Rosa City Code 6-66.020(G) and 6-66.040(A)

\*\* The San Francisco-Oakland-San Jose metropolitan area is comprised of Alameda, Contra Costa, Marin, Napa, San Francisco, San Mateo, Santa Clara, Santa Cruz, Solano, and Sonoma Counties.  
 Source: [U.S. Department of Labor, Bureau of Labor Statistics](https://www.bls.gov)

*Attached: Consumer Price Indexes Pacific Cities August 2020, release date September 11, 2020*

HOUSING AND COMMUNITY SERVICES  
 90 Santa Rosa Avenue · Santa Rosa, CA 95404  
 Phone (707) 543-3300 · Fax (707) 543-3353  
[www.srcity.org](http://www.srcity.org)



**For Release: Friday, September 11, 2020**

**20-1720-SAN**

WESTERN INFORMATION OFFICE: San Francisco, Calif.

Technical information: (415) 625-2270 BLSinfoSF@bls.gov www.bls.gov/regions/west

Media contact: (415) 625-2270

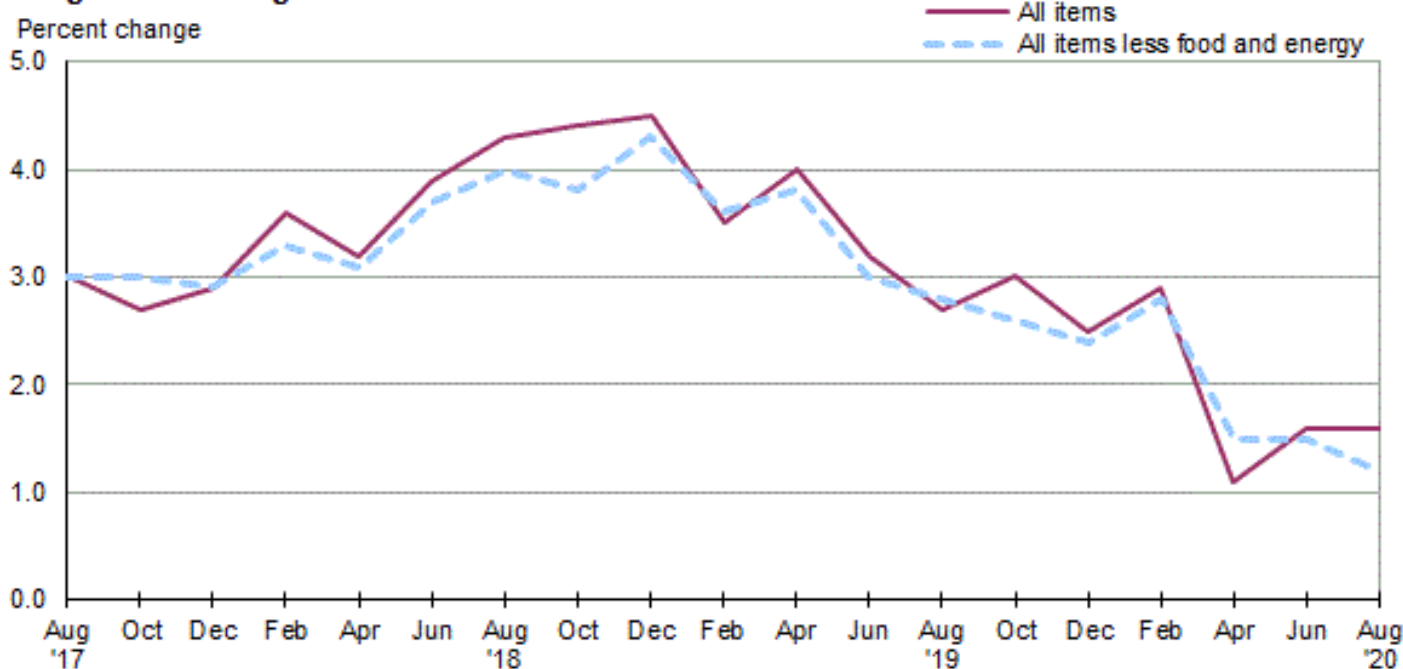
## **Consumer Price Index, San Francisco Area — August 2020**

**Area prices were unchanged over the past two months, up 1.6 percent from a year ago**

Prices in the San Francisco area, as measured by the Consumer Price Index for All Urban Consumers (CPI-U), were unchanged for the two months ending in August 2020, the U.S. Bureau of Labor Statistics reported today. (See [table A.](#)) Assistant Commissioner for Regional Operations Richard Holden noted that higher prices for gasoline were offset by lower prices for food at home during the past two months, holding the overall index level virtually unchanged. (Data in this report are not seasonally adjusted. Accordingly, month-to-month changes may reflect seasonal influences.)

Over the last 12 months, the CPI-U advanced 1.6 percent. (See [chart 1](#) and [table A.](#)) The index for all items less food and energy increased 1.2 percent over the year. Food prices rose 5.4 percent. Energy prices decreased 1.8 percent, largely the result of a decrease in the price of gasoline. (See [table 1.](#))

**Chart 1. Over-the-year percent change in CPI-U, San Francisco-Oakland-Hayward, CA, August 2017–August 2020**



Source: U.S. Bureau of Labor Statistics.

## Food

Food prices declined 0.8 percent for the two months ending in August. (See [table 1.](#)) Prices for food at home decreased 2.2 percent, largely due to price declines in meat, poultry, fish and eggs (-4.7 percent). Prices for food away from home advanced 0.7 percent for the same period.

Over the year, food prices rose 5.4 percent. Prices for food at home increased 7.2 percent since a year ago, led by meat, poultry, fish and eggs prices (17.4 percent). Prices for food away from home advanced 3.6 percent.

## Energy

The energy index advanced 3.7 percent for the two months ending in August. The increase was mainly due to higher prices for gasoline (7.6 percent). Prices for natural gas service rose 2.3 percent, while prices for electricity were unchanged for the same period.

Energy prices decreased 1.8 percent over the year, largely due to lower prices for gasoline (-10.2 percent). Prices paid for electricity advanced 8.2 percent, and prices for natural gas service increased 6.9 percent during the past year.

## All items less food and energy

The index for all items less food and energy were unchanged in the latest two-month period. Higher prices for used cars and trucks (9.2 percent), motor vehicle insurance (6.7 percent), and shelter (0.1 percent) helped offset lower prices for other goods and services (-1.1 percent), education and communication (-0.3 percent), and medical care (-0.1 percent).

Over the year, the index for all items less food and energy increased 1.2 percent. Components contributing to the increase included motor vehicle insurance (5.3 percent) and shelter (2.6 percent). Partly offsetting the increase was a price decrease in new and used motor vehicles (-2.7 percent).

**Table A. San Francisco-Oakland-Hayward, CA, CPI-U 2-month and 12-month percent changes, all items index, not seasonally adjusted**

Month	2016		2017		2018		2019		2020	
	2-month	12-month	2-month	12-month	2-month	12-month	2-month	12-month	2-month	12-month
February .....	0.9	3.0	0.8	3.4	1.4	3.6	0.5	3.5	0.9	2.9
April .....	0.7	2.7	1.1	3.8	0.8	3.2	1.2	4.0	-0.5	1.1
June .....	0.6	2.7	0.3	3.5	0.9	3.9	0.2	3.2	0.7	1.6
August .....	0.7	3.1	0.2	3.0	0.6	4.3	0.1	2.7	0.0	1.6
October .....	0.9	3.6	0.6	2.7	0.7	4.4	1.0	3.0		
December .....	-0.3	3.5	-0.1	2.9	0.1	4.5	-0.5	2.5		

**The October 2020 Consumer Price Index for the San Francisco area is scheduled to be released on November 12, 2020**