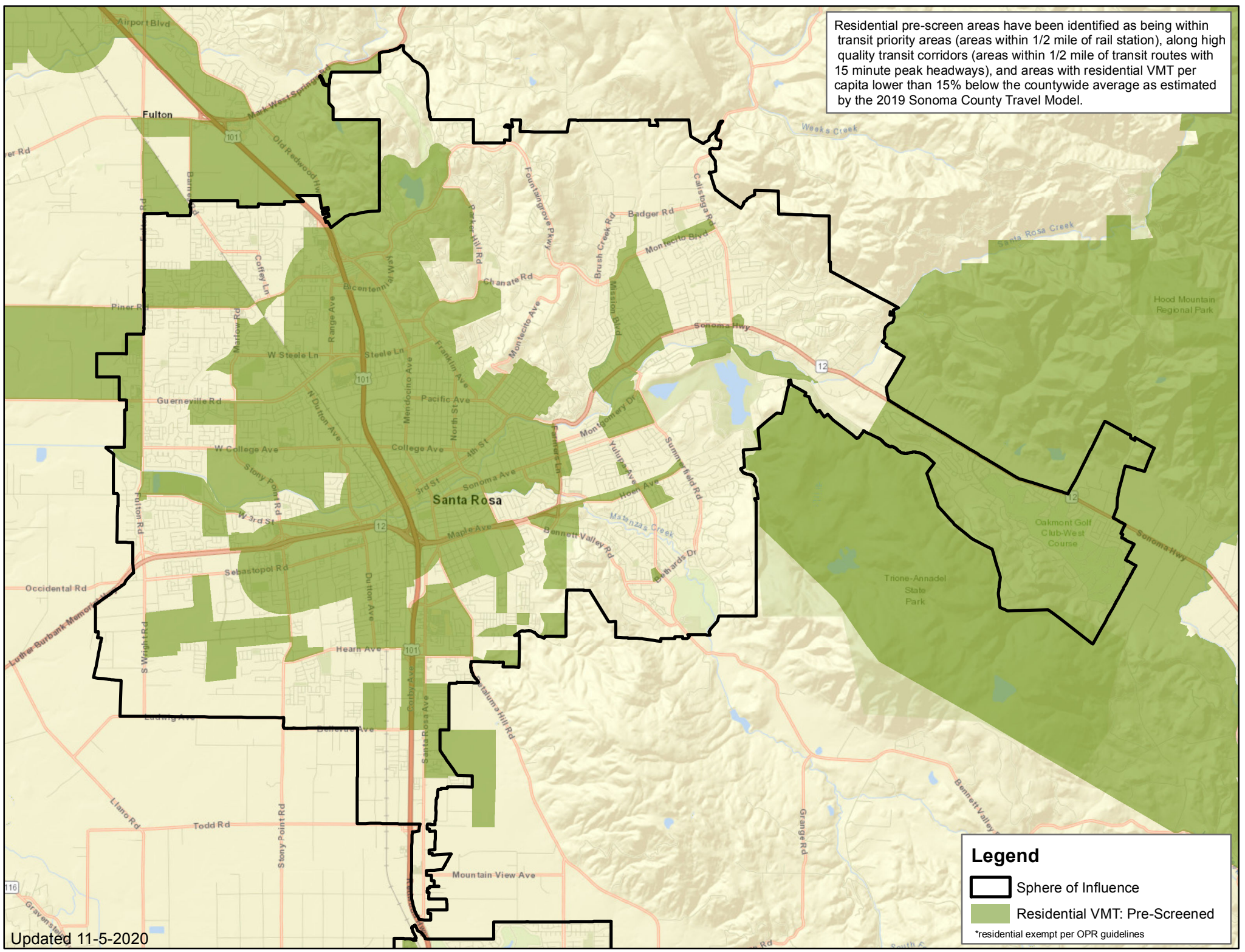
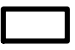



Residential pre-screen areas have been identified as being within transit priority areas (areas within 1/2 mile of rail station), along high quality transit corridors (areas within 1/2 mile of transit routes with 15 minute peak headways), and areas with residential VMT per capita lower than 15% below the countywide average as estimated by the 2019 Sonoma County Travel Model.



Legend

-  Sphere of Influence
-  Residential VMT: Pre-Screened

*residential exempt per OPR guidelines