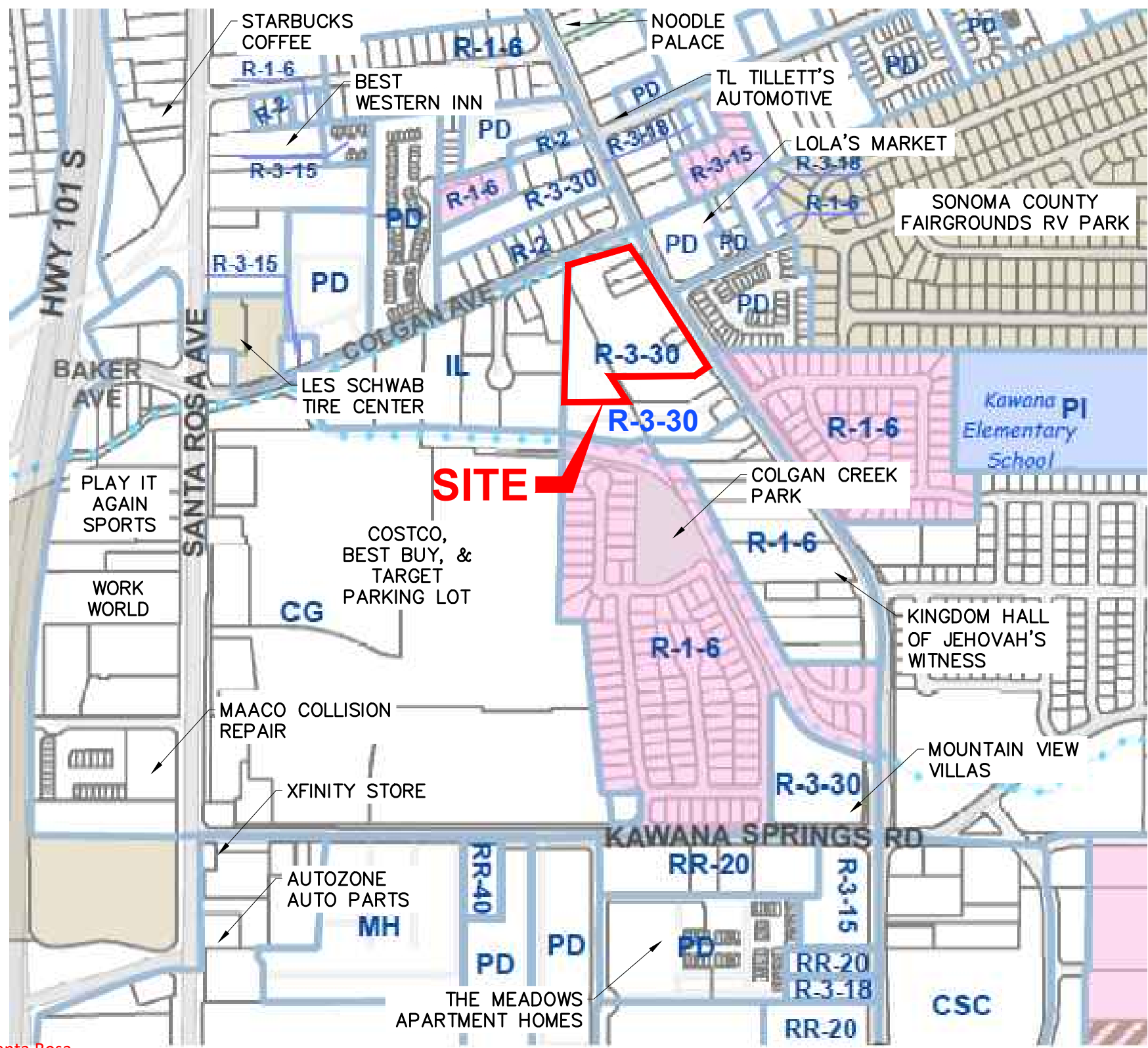


File: T:\2018 PROJECTS\18294\DWG\ADOBE-DESIGN\DESIGN REVIEW\18294_01-NEIGHBORHOOD_CONTEXT_MAP.DWG;10/20/2020 4:32:33 PM;Justin Rodden

- UGB
- Zoning
- Hillside
- Hillside & Small Lot
- Small Lot
- Railroad
- All Other Creeks
- Santa Rosa Creek
- Lakes & Ponds
- Parks
- Schools
- COUNTY
- SANTA ROSA

- ZONING**
- BP Business Park
 - CD Downtown Commercial
 - CD-5 Downtown Commercial, 5 stories
 - CD-7 Downtown Commercial, 7 stories
 - CD-10 Downtown Commercial, 10 stories
 - CG General Commercial
 - CN Neighborhood Commercial
 - CO Office/Commercial
 - CSC Commercial Shopping Center
 - CV Motor Vehicle Sales
 - IG General Industry
 - IL Light Industrial
 - MH Mobile Home Park
 - OSC Open Space Conservation
 - OSR Open Space Recreation
 - PD Planned Development
 - PI Public Institutional
 - R-1-6, R-1-7.5, R-1-9, R-1-15 Single Family Residential
 - R-2, R-3-10, R-3-15, R-3-18, R-3-30, R-3-HD Multi Family Residential
 - RR-20, RR-40 Rural Residential
 - TV-R Transit Village - Residential
 - TV-M - Transit Village - Mixed Use
- COMBINING DISTRICTS**
- G = Gateway
 - H = Historic
 - LIL = Limited Light Industrial
 - SA = Station Area
 - SR = Scenic Road



SITE

City of Santa Rosa
 Planning & Economic
 Development Department
 10/30/2020
 RECEIVED



*MAP CREATED USING THE CITY OF SANTA ROSA ZONING MAP.

October 16, 2020



**SITE ANALYSIS & NEIGHBORHOOD
 CONTEXT MAP**

McKellar McGowan Holdings, LLC
 5075 Shoreham Place Ste. # 280, San Diego, CA



1220 N. Dutton Ave., Santa Rosa, CA 95401
 P. (707) 541-2300 F. (707) 541-2301
 Website: www.adobeinc.com

"A Service You Can Count On!"