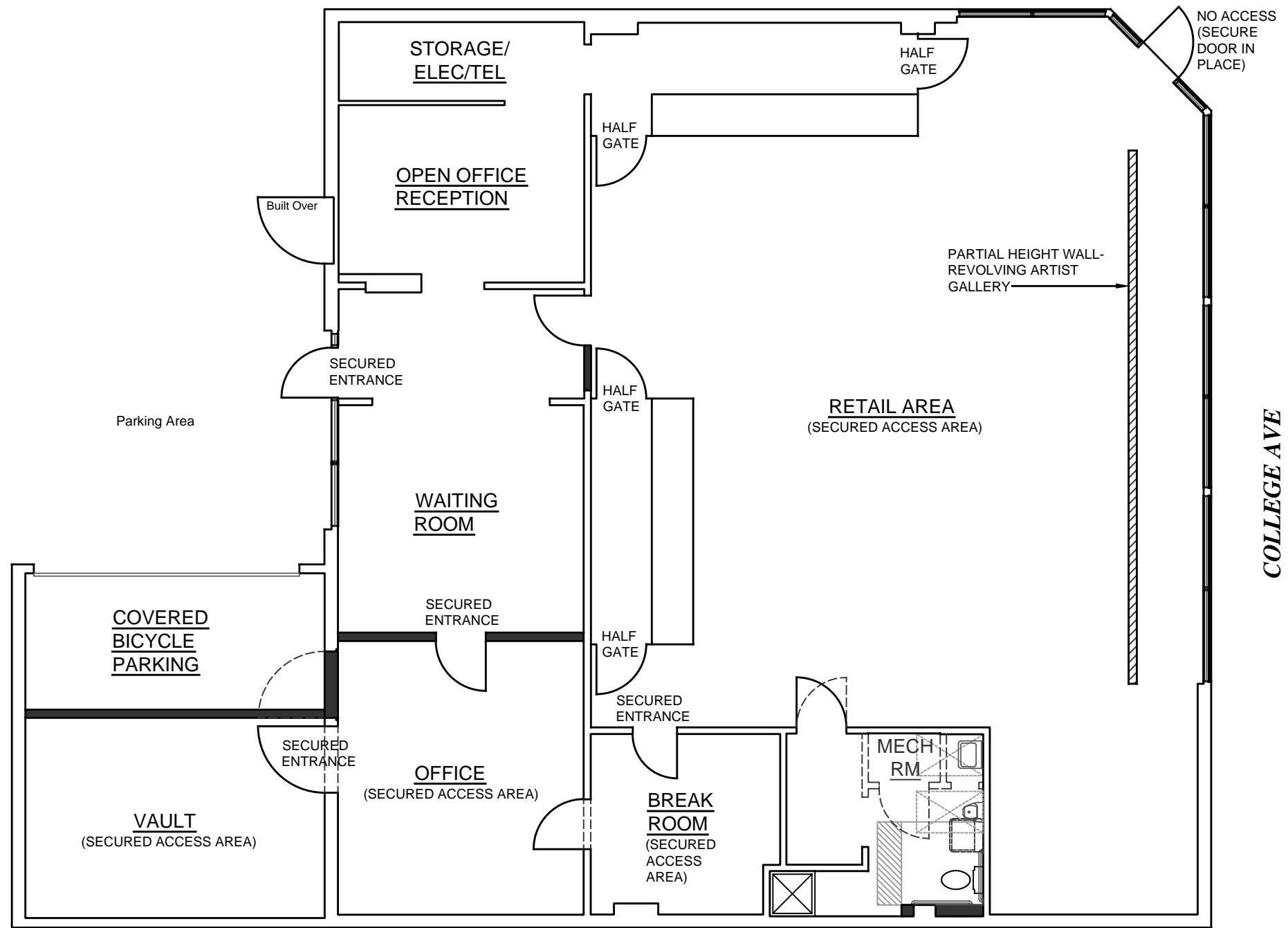
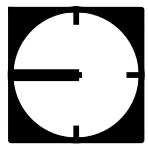


GLENN ST



City of Santa Rosa
 Planning & Economic
 Development Department
 Dec 30, 2020
 RECEIVED

PROPOSED FLOOR PLAN
 SCALE: 1/8"= 1'-0"
 10/30/18



GREEN PEN- 353 COLLEGE AVENUE SANTA ROSA, CA 95401
 PLANNING APPLICATION

